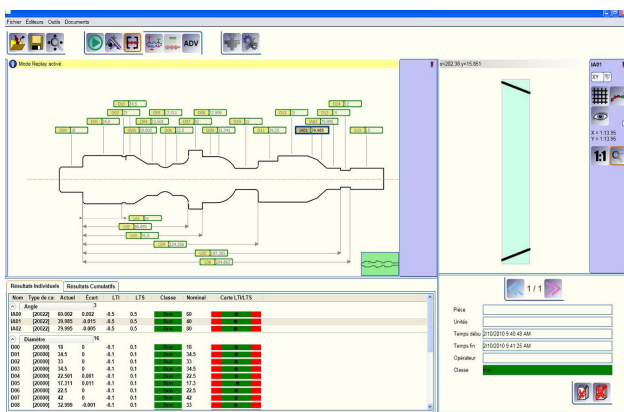


TESA-SCAN 52 REFLEX-Click

REFLEX-Click mode: a breakthrough in the field of turned parts inspection

22 years ago TESA was the company to launch the TESA-Profile optical measuring system that allowed turned parts to be scanned and therefore measured quickly and accurately. Over the years TESA has continued to develop its TESA-SCAN product family, introducing the capability of measuring standard threads, then, non standard threads, improved accuracy, enhanced speed, look and feel, additional tolerance tables, etc. Copied but never equalled, the TESA-SCAN remains the standard for the turned parts industry. Thanks to the experience gained over the years and collaboration with several key users, TESA is pleased to launch at the Control show the revolutionary TESA-SCAN 52 REFLEX-Click.

The TESA-SCAN 52 REFLEX Click enables the user to measure round symmetrical parts without any prior knowledge of programming whatsoever. Place the part, press the button and the part is scanned. The results (lengths, diameters, angles, radii, etc.) will be displayed and a measuring program created. Using the mouse "Click" on the measurement that has been taken, the user can drag it to any reference position and the program will be modified automatically. If a part has already been programmed by the machine it is automatically recognised and recalled.



The TESA-REFLEX software family is intuitive, eye-catching with an easy to use interface offering non experienced users the full capabilities of measuring a complex part in one Click. The creation of measuring programs is achieved by automatic recognition of complex measurements such as diameters, lengths, angles, radii or even threads.

Comprehensive presentation of the results using bold colours allows their analysis within seconds reducing the inspection time considerably.

These new features bring an incomparable ease of use, making this machine the perfect inspection tool on any shop floor.



TESA extends its sales programme with the TESA-SCAN 52 REFLEX-Click especially designed for the shop floor. The whole REFLEX-Click functionality is provided by just one button.

Drawing upon the whole TESA-SCAN expertise covered by the SWISS MADE label, this new equipment dedicated to round parts offers high technological performance:

- **Automatic diameter and length measurement** without prior programming
- **Automatic part recognition** in the case of pre-existing programs
- **Accuracy* of 2 µm (diameters); 5 µm (lengths)**
- Astonishingly short cycle time

Main features:

- Automatic diameter and length measurement in the REFLEX-Click mode
- Automatic part and program recognition
- Operator and programmer mode management
- Flexible measurement reports
- Robust mechanical construction incorporating a granite base and state-of-the-art components
- Measuring range (ØxL) : 52 x 300mm
- *Accuracy (MPE): Ø = (2 + D/100), L =(5 + L/100) µm, D and L in mm

Optionally available, a supplementary rotational axis offers the possibility to measure dynamic features such as run-out, coaxiality, across flats and circularity for the most demanding applications.

